

### Specifications

| Models                                | S-40       |         | S-45        |         |
|---------------------------------------|------------|---------|-------------|---------|
|                                       | US         | Metric  | US          | Metric  |
| <b>Measurements</b>                   |            |         |             |         |
| Working height maximum*               | 46 ft      | 14.19 m | 51 ft       | 15.72 m |
| Platform height maximum               | 40 ft      | 12.19 m | 45 ft       | 13.72 m |
| Horizontal reach maximum              | 31 ft 8 in | 9.67 m  | 36 ft 8 in  | 11.12 m |
| Below ground reach                    | 3 ft 2 in  | 0.97 m  | 4 ft 11 in  | 1.5 m   |
| <b>A</b> Platform length - 8 ft model | 3 ft       | 0.91 m  | 3 ft        | 0.91 m  |
| Platform length - 6 ft model          | 2 ft 6 in  | 0.76 m  | 2 ft 6 in   | 0.76 m  |
| <b>B</b> Platform width - 8 ft model  | 8 ft       | 2.44 m  | 8 ft        | 2.44 m  |
| Platform width - 6 ft model           | 6 ft       | 1.83 m  | 6 ft        | 1.83 m  |
| <b>C</b> Height - stowed              | 8 ft 2 in  | 2.49 m  | 8 ft 2 in   | 2.49 m  |
| - stowed with Trax option             | 8 ft 2 in  | 2.49 m  | 8 ft 2 in   | 2.49 m  |
| <b>D</b> Length - stowed              | 24 ft 3 in | 7.39 m  | 27 ft 10 in | 8.48 m  |
| - transport (jib tucked under)        |            |         | 22 ft 4 in  | 6.80 m  |
| <b>E</b> Width - standard tires       | 7 ft 6 in  | 2.30 m  | 7 ft 4 in   | 2.24 m  |
| - Trax option                         | 7 ft 7 in  | 2.31 m  | 7 ft 7 in   | 2.31 m  |
| <b>F</b> Wheelbase                    | 7 ft 3 in  | 2.20 m  | 7 ft 3 in   | 2.20 m  |
| <b>G</b> Ground clearance - center    | 1 ft .5 in | 0.32 m  | 1 ft .5 in  | 0.32 m  |

### Productivity

|                               |                      |          |                      |          |
|-------------------------------|----------------------|----------|----------------------|----------|
| Lift capacity                 | 500 lbs              | 227 kg   | 500 lbs              | 227 kg   |
| Platform rotation             | 160°                 |          | 160°                 |          |
| Vertical jib rotation         |                      |          | 135°                 |          |
| Turntable rotation            | 360° continuous      |          | 360° continuous      |          |
| Turntable tailswing           | 2 ft 10 in           | 0.86 m   | 2 ft 10 in           | 0.86 m   |
| Drive speed - stowed          | 4.8 mph              | 7.7 km/h | 4.8 mph              | 7.7 km/h |
| - raised or extended          | 0.68 mph             | 1.1 km/h | 0.68 mph             | 1.1 km/h |
| - Trax option stowed          | 2.5 mph              | 4.0 km/h | 2.5 mph              | 4.0 km/h |
| - Trax option raised          | 0.68 mph             | 1.1 km/h | 0.68 mph             | 1.1 km/h |
| Gradeability - 2WD - stowed** | 30%                  |          | 30%                  |          |
| - 4WD - stowed**              | 40%                  |          | 40%                  |          |
| Turning radius - inside       | 6 ft 8 in            | 2.0 m    | 6 ft 8 in            | 2.0 m    |
| - outside                     | 15 ft 8 in           | 4.78 m   | 15 ft 8 in           | 4.78 m   |
| - Trax option inside          | 7 ft 9 in            | 2.36 m   | 7 ft 9 in            | 2.36 m   |
| - Trax option outside         | 17 ft                | 5.18 m   | 17 ft                | 5.18 m   |
| Controls                      | 12 V DC proportional |          | 12 V DC proportional |          |
| Tires - RT lug                | 12-16.5 NHS          |          | 12-16.5 NHS          |          |
|                               | Trax                 |          | Trax                 |          |

### Power

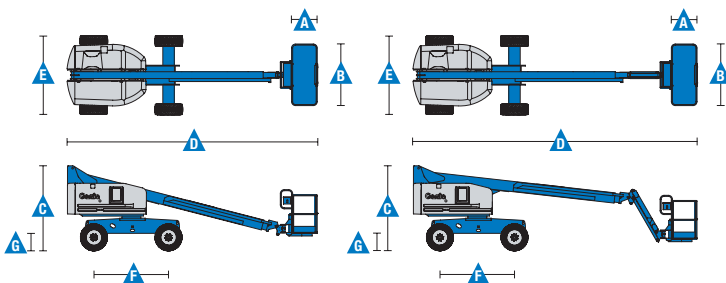
|                         |                                                                                                                               |       |        |       |
|-------------------------|-------------------------------------------------------------------------------------------------------------------------------|-------|--------|-------|
| Power source            | 48 hp (35.79 kW) Deutz diesel T4f D2.9L4<br>48 hp (35.79 kW) Perkins diesel T4f 404F-22<br>60hp (44.74kW) Ford gas/LPG MSG425 |       |        |       |
| Auxiliary power unit    | 12 V DC                                                                                                                       |       |        |       |
| Hydraulic tank capacity | 45 gal                                                                                                                        | 170 L | 45 gal | 170 L |
| Fuel tank capacity      | 20 gal                                                                                                                        | 76 L  | 20 gal | 76 L  |

### Weight\*\*\*

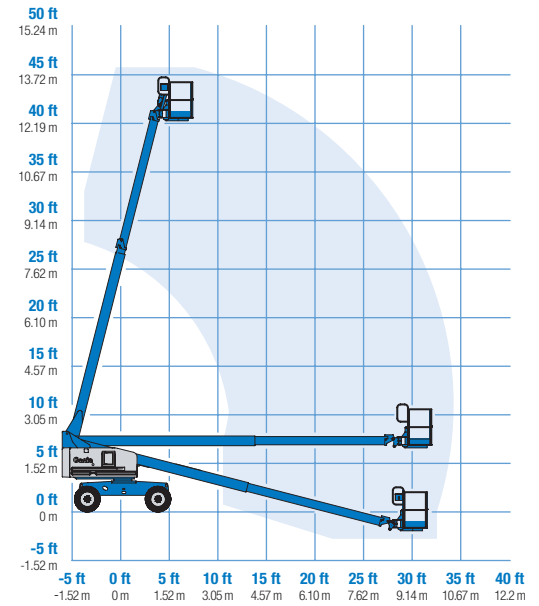
|          |            |          |            |          |
|----------|------------|----------|------------|----------|
| Standard | 12,320 lbs | 5,588 kg | 15,280 lbs | 6,931 kg |
| Trax     | 13,680 lbs | 6,205 kg | 16,670 lbs | 7,561 kg |

### Standards Compliance

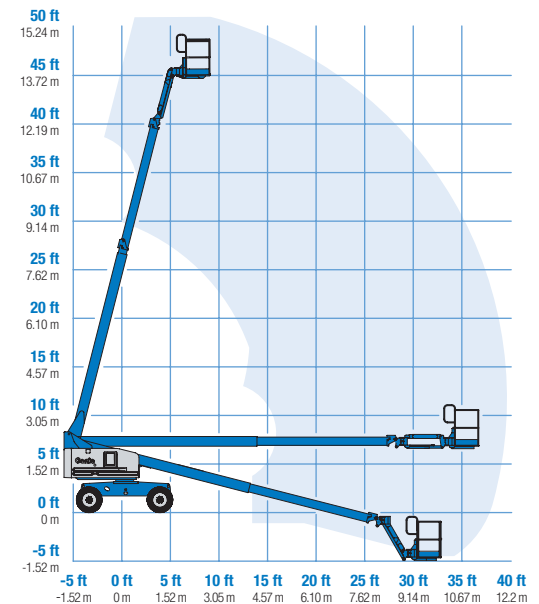
ANSI A92.5, CSA B354.4, EN 280, AS 1418.10



### Range Of Motion S-40



### Range Of Motion S-45



\* The metric equivalent of working height adds 2 m to platform height. U.S. adds 6 ft to platform height.  
\*\* Gradeability applies to driving on slopes. See operator's manual for details regarding slope ratings.  
\*\*\* Weight will vary depending on options and/or country standards.